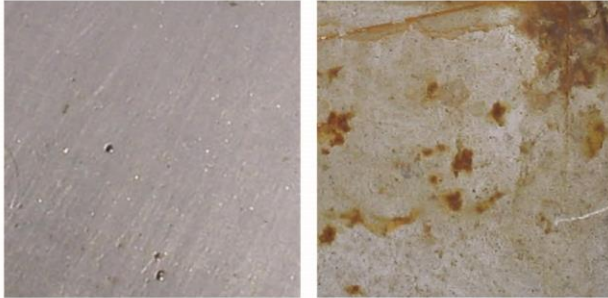




**AUSTRALIAN
INHIBITOR**
PROTECTION. PREVENTION. PRESERVATION. PROVEN.

G16 GREASE

IN THE FIELD



Real World testing shows G16 (on left) preventing corrosion. This test subject was lightly coated with G16 before being fully exposed to the elements. The sample on the right is coated with a competitors product

FILM THICKNESS (mm)*	5% SALT FOG (life hours)	HUMIDITY CABINET (life hours)
0.015	120	750
0.025	500	4000
0.05	1000	4000

ABOUT G16

G16 is a contact corrosion inhibitor for the protection of ferrous and non-ferrous metals. It forms highly polar microscopic platelets which produce a dense layer of overlapping particles. The result is a virtually impenetrable soft film moisture barrier.

FEATURES

- Provides long term corrosion resistance
- Is thermally stable from -40 oC to + 240 oC without cracking, chipping, peeling or sagging
- Holds sharp corners and edges.
- Sunlight resistant
- Does not stain metal surfaces
- Has good water displacing properties

HOW TO USE

Surface preparation – Maximum performance requires the surface requiring protection is clean and dry.

Application – Apply via brush. Always aim for a even, liberal coating, over the entire surface to be protected.

Removal – When it is time to remove G16, use a standard industrial solvents such as Mineral Spirits, Perchloroethylene or Trichloroethylene

SERVICE LIFE

OUTDOOR OPEN STORAGE - Up to 1 years protection

INDOOR STORAGE - Up to 5 years protection