

G16 GREASE

**AUSTRALIAN
INHIBITOR**

AUSTRALIAN INHIBITOR G16 PREMIUM CONTACT CORROSION INHIBITOR WATER DISPLACING GREASE AND LUBRICANT

G16 Provides long term corrosion resistance

G16 Is thermally stable from -40 oC to + 240 oC without cracking, chipping, peeling or sagging

G16 is Thixotropic, it holds sharp corners and edges.

G16 has been tested for exterior exposure, under adverse conditions it does not fail

G15 Does not stain metal surfaces, when used over steel, copper, aluminium and their alloys

G16 Has good water displacing properties and can be used as a general lubricant.

APPROVALS AND PERFORMANCE LEVELS

G16 Premium Corrosion Inhibitor

FILM THICKNESS (mm)*	5% SALT FOG (life hours)	HUMIDITY CABINET (life hours)
0.015	120	750
0.025	500	4000
0.05	1000	4000

Accelerated Corrosion Testing:

Salt spray: 5% NACL. STD. No. 791B. Method 5329.1 and 4001.2 respectively

5 to 40+ days Dependant on thickness

Humidity:

31 to 165+ days Dependant on thickness

G16 meets the stringent requirements of Australia's trusted Manufacturing industries and OEM suppliers

SURFACE PREPERATION:

Maximum performance of **G16** is achieved when the surface to be protected is clean, dry and free of contaminants such as dirt, dust, flaking paint and other residual matter. Direct contact with PVC, Leather and some plastics may cause compatibility problem. Pease test prior to use.

FEATURES AND BENEFITS

Superior Protection.

G16 will protect against corrosion during storage, domestic and international transportation.

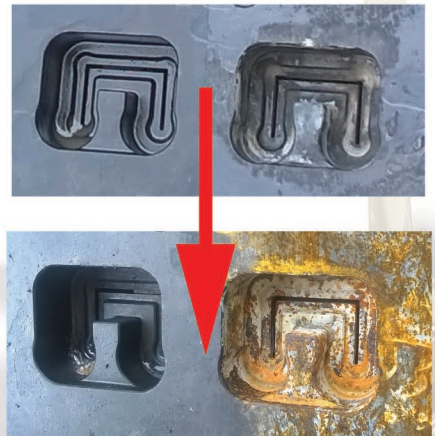
Economical.

At only 25 micron thickness. **G16** can protect a big surface with only a small amount of product.

Easy to use.

G16 is easy to understand, easy to apply and easy to remove. This is corrosion prevention at its best.

Test Results



This cast steel test subject was lightly coated with G16 on the left before being fully exposed to the elements. The bottom image shows results after 1500 hours (65 days)

APPLICATION

G16 is designed to be used as supplied, thinning is not recommended. **G16** is best applied via a brush, dipping may also be applicable. Endeavour for a liberal even coating.

REMOVAL

When it is time to remove **G16**, use a standard industrial solvents such as Mineral Spirits, Perchloroethylene or Trichloroethylene



**Unsurpassed Corrosion
Prevention for
60+ years**

CORROSION PREVENTATIVE

- FOILS
- FILMS
- PAPERS
- OILS
- ADDITIVES
- COMPLETE PACKAGING SOLUTIONS



+613 9768 2322

6 Nicholas Drive Dandenong Sth
VIC 3175 Australia

sales@australianinhibitor.com.au